

Maritime Gateway

Since 2002







SAJJAN JINDAL
Chairman, JSW Group

“ The JSW Group has always grown by "Making in India". Our growth is in areas where the country needs development.

Our Indian roots position us to capitalize this push, to make more in India and import less. JSW Steel has increased its manufacturing capacity to 18 million metric tons per annum to build a new India. JSW Cement is well on its way to achieving its 20 million MTPA production goal. JSW Energy now generates 4,531 MW to power India's growth.

JSW Infrastructure is constructing new ports and upgrading its existing facilities on both coasts of the country. Additionally, we are expanding our landscape by acquiring new ports, building terminals and participating in last mile connectivity projects. ”

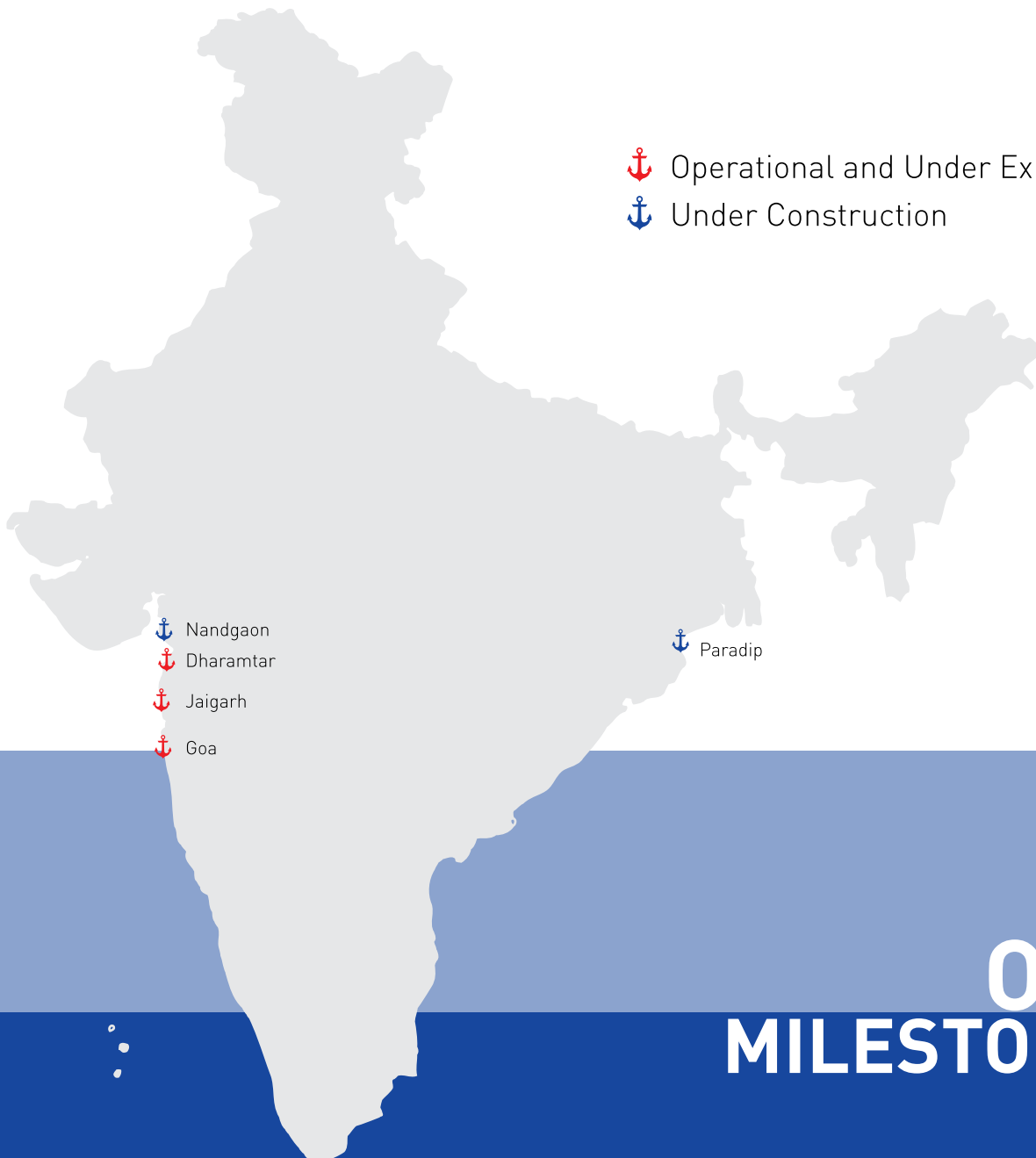
“ Logistics Industry is going global and becoming more organized. It will soon go through consolidation phase and gain further momentum with the requisite impetus from "Make in India" call by our Hon. Prime Minister. Additionally, Blue Revolution through Sagar Mala Project, implementation of GST, DMIC, DFC, E-Commerce, Digitization & use of Modern Technology will further give a push in the right direction for sustainable growth.



CAPT. BVJK SHARMA
Jt. MD & CEO
JSW Infrastructure

JSW Infrastructure is aggressively pursuing capacity expansion plans. We are working with the Government and Manufacturing Sector to develop Port based industries in the hinterland of our Ports. Our plans of creating 200 MTPA capacity by 2020 put us well on our path to become the leading player in the Infrastructure sector in India.

I personally believe that success depends on the size of thought, speed of execution, depth of determination and strength of attitude and with that belief we create a milestone every single day. ”



 Operational and Under Expansion
 Under Construction

 Nandgaon
 Dharamtar
 Jaigarh
 Goa

 Paradip

INFRASTRUCTURE

JSW Infrastructure has grown to become one of India's leading Infrastructure development companies. Its ports and terminals in Maharashtra and Goa currently have an operational capacity of 33 MPTA. Within the next four years this is going to increase more than six-fold to reach 200 MPTA through Greenfield and Brownfield expansions.

This capacity is underpinned by the assurance that comes from JSW Infrastructure's excellent track record of timely project implementation and successful operations benchmarked to international standards.

Operational capacity

33MPTA

will increase to

200MPTA

by 2020

OUR MILESTONES

JUNE 2002

JSW Group acquires ABG Goa Port Private Limited and company is renamed as South West Port Limited (SWPL)

SWPL starts operations at Mormugao (Goa) with two operational berths to handle coal and steel products

SEPTEMBER 2004

MARCH 2007

JSW Infrastructure signs a lease with Maharashtra Maritime Board to develop a greenfield port facility at Jaigarh (Maharashtra)

STEEL

It has an installed capacity of 14.3 MTPA which is being upgraded to 18 MTPA by the end of FY 16. With its plants located across 6 strategic locations in South and West India, the plan is to increase the overall capacity to 40 MTPA.

Currently produces

18MTPA

will increase to

40MTPA

by 2025

ENERGY

It is one of the earliest private entrants into the power sector positioned strongly as a full-spectrum integrated power company with a presence across the power sector value chain. With 4531 MW operational capacity, it remains one of the most efficient Power Company in the country with one of the country's largest open cast mining operation by volume and one of the largest private sector Hydro Operator in India.

Current capacity of

4,531MW

will increase to

10,000MW

by 2020

CEMENT

It is currently upgrading production capacity from 6MTPA to 20 MTPA by year 2020. It is currently executing expansion projects in Vijayanagar plant (South) and Salboni (West Bengal) and gearing up to set up plant in Jajpur (Orissa).

Production capacity

6MTPA

will increase to

20MTPA

by 2020

JSW Infrastructure executes a concession agreement for a common user, multi-cargo port at Jaigarh

JUNE 2008

JSW Infrastructure signs lease deed for development of greenfield port at Nandgaon (Maharashtra)

OCTOBER 2011

The company signs a lease deed for development of jetty at Dharamtar

FEBRUARY 2014

Jaigarh Port handles its first cape-size vessel

APRIL 2015

JSW Infrastructure wins the bid for development of EQ1, EQ2 and EQ3 terminals at Paradip Port, capacity 30MTPA

FEBRUARY 2016

JANUARY 2010

Jaigarh Port starts operations by handling coal for JSW Energy within 20 months of signing concession agreement

SEPTEMBER 2012

JSW Infrastructure signs a long-term operations and maintenance contract for handling cargo at Dharamtar jetty for JSW Dolvi Steel Works (Maharashtra)

FEBRUARY 2015

Signs concession agreement to develop and operate the iron ore export terminal at Paradip port

JUNE 2015

JSW Infrastructure signs concession agreement with Konkan Railway Corporation Limited to construct 33.7km of new rail line to connect Jaigarh Port to Konkan Railways' network

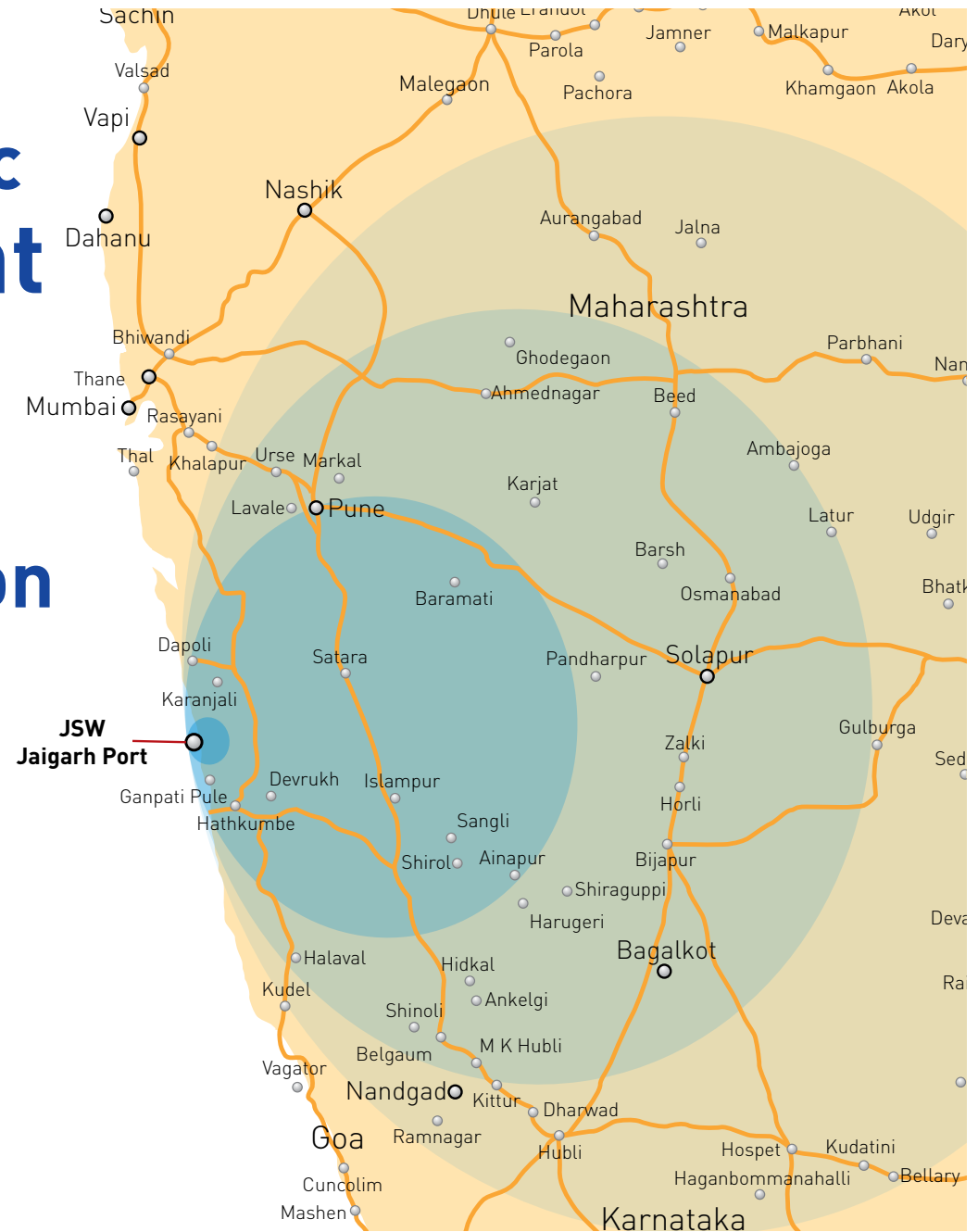
JAIGARH PORT 2020



1. VLCC
2. MBC (Mini Bulk Carrier/Handymax Berth)
3. Cape Alongside
4. Valemax
5. EEE Series
6. Q-Max



Ensuring
**socio-economic
development**
through major
**Port based
Industrialization**
in the region.



Benchmarking Maritime Excellence



Maiden Cape vessel at Jaigarh Port - MV
Indian Friendship April 2015

JAIGARH PORT: PHASE 1

15 MTPA Operational

Jaigarh Port is strategically located between the two major port cities of Mumbai and Goa in the western Indian state of Maharashtra. Its location means it has the advantage of servicing cargo from Maharashtra as well as Karnataka; the latter is one of the fastest growing industrial states in India.

This Greenfield multi-cargo deep water port (20 meters deep) in Jaigarh currently has a capacity of 15 MTPA. The port is now expanding this to 80 MTPA by building capability to handle containers, ro-ro vessels, LNG, POL and Offshore business.

80 MTPA
capacity by 2020

JSW Jaigarh Port is a modern, mechanized, environment friendly, 24x7 deep-water Port. Some of its features and facilities include:

- Berth 1 for coal handling using 2x2000 TPH ship grab uploaders including covered back-up conveying systems.
- Berth 2 for other bulk, break-bulk cargo using 2 mobile harbor cranes 2x1200 TPH.
- Berth 6A (343 meters) was recently commissioned and will initially berth mini bulk carriers 3x8000 DWT simultaneously for transshipment and can also accommodate Handymax vessels.
- 5 stacker cum reclaimers along with mechanised material handling systems.
- 105x450 meter covered coal storage that can accommodate around 300,000 metric tons of cargo.
- Adequate covered warehouses that can store more than 120,000 metric tons of fertilizers and agro commodities at any given point of time.
- A container yard to accommodate 1500 TEU (twenty foot equivalent unit) with 72 reefer plugins.
- Back-up conveying, storage and dispatch system.
- 40000 kL tank farm to handle molasses and edible oil.
- Berth 3A (306 meters) is currently being commissioned and can accommodate cape-size vessels.
- 2 ship unloaders with terminal throughput capacity of 85,000 TPD for handling bulk ore will be installed.

LOCATION HIGHLIGHTS

Latitude	17° 18' 09" N
Longitude	73° 12' 30" E
Nearest village	Jaigarh
District/Town	Ratnagiri

MARINE INFRASTRUCTURE

Berth length 1 & 2	600meters
Max vessel size	LOA 295m Breadth 42m
Draught	18.5m
Minimum depths	Outer channel 19.8meters Inner channel 19.2meters Berth pocket 19.8meters
Backup area	33 acres
Breakwater length	700 meters

EXPORT CARGO

Bauxite, Fly ash,
Molasses, Sugar and
Container

IMPORT CARGO

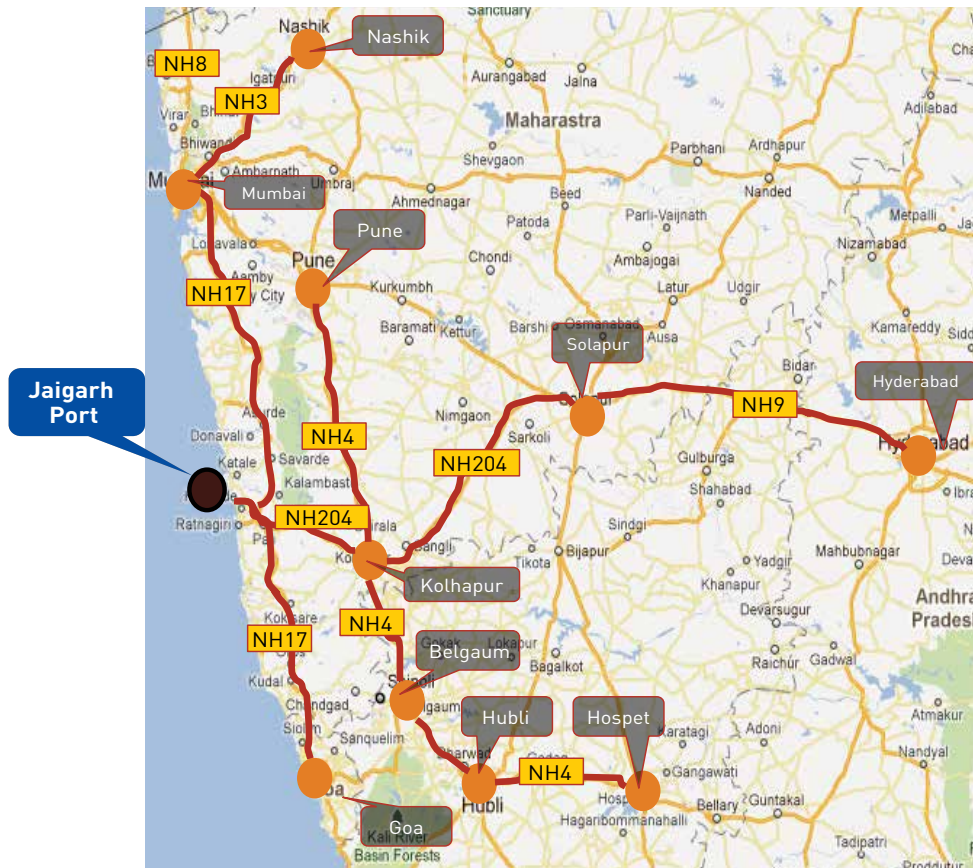
Coal, Coke, Project Cargo
Limestone, Fertilizers,
Coated Pipes, Rock
Phosphate, Sulfur,
Sugar, Maize

STRATEGICALLY CONNECTING THE COAST TO THE HINTERLANDS

Located strategically between the two major ports of Mumbai and Goa, it is well placed to cater to the export-import (EXIM) and coastal movement requirements of the industries in the country's hinterland.

The port has the potential to be a hub for exporting molasses and importing edible oil and other liquid cargoes. Its location makes it ideal for setting up edible oil refineries in the vicinity. Several Port based industries are looking to set up manufacturing units in the hinterland of the port to save on logistics' costs. Vehicle manufacturers in Maharashtra and Karnataka are keen to use the port to export their produce.

JSW Jaigarh Port boasts of an efficient logistics chain. It is well connected to the Indian hinterland by road, rail, pipeline and Inland Water Transport.



🚧 Road connectivity:

The Port is connected to the NH-17 at Nivali via a 42 KM long, 2 lane State Highway (SH164). The NH-17 connects Mumbai, Goa, Mangalore, Kochi. It also connects to NH-8 and NH-3 connecting Jaigarh Port to Northern and Central India.

🚧 Jaigarh – Nivali 4 lane highway

The Government of India under its Sagarmala initiative has taken a decision to expand this two lane highway to a four lane highway or alternatively construct a new 4 lane road.



Rail connectivity:

JSW Jaigarh Port is developing a 33.7 km new railway line to connect Jaigarh Port to the new Digni station on Konkan Railway network through PPP route and has formed an SPV - Jaigarh Digni Rail Ltd. In this SPV, JSW Jaigarh Port is investing 63% equity, Konkan Railway Corporation Ltd - 26% equity and the Government of Maharashtra through Maharashtra Maritime Board is investing 11% equity. This rail corridor can handle 20 trains each way per day and is expected to be ready by December 2018.

Currently, Port has developed a private rail siding at Ratnagiri (55kms from Jaigarh) and is servicing the customers needing rail connectivity.

Chiplun Karad Rail Link

The proposed Chiplun – Karad Rail connectivity project, sanctioned by Ministry of Railways, is about 103 km rail line between Central Railway and Konkan Railway (Chiplun Station and Karad Station). This rail line will reduce the distance from Chiplun to Karad from 528 KM to 102.9 KM. It would also reduce distances to other cargo generating locations like Belgaum, Bijapur, Gulbarga, Latur, Parli and Solapur.

The rail line passes through a series of hills of Sahyadri mountain ranges and have 16 tunnels (out of which 9 tunnels more than 2 kms) with a total length of 46.2 KM. Estimated project cost of the project is Rs. 3196 Cr, proposed to be funded in 70:30 debt equity ratio. Once developed, this rail gateway would provide JSW Jaigarh Port access to the entire Central India and expand the hinterland manifold.

Poised to optimise logistic cost of coal supply to NTPCs Thermal Power Plants (TPP) at Kudgi (Karnataka) and Hotgi (Maharashtra).

Pipeline connectivity:

Opportunity to share the existing Right of Way (RoW) of Gas Authority of India Limited (GAIL) and Konkan Railway Corporation Limited (KRCL) at Jaigarh Port. This is a safe, secure and cost-efficient large volume transportation option.

Air connectivity:

In addition to the 2 helipads at Jaigarh Port, Ratnagiri has an airstrip that small and mid-size aircraft can land in. The nearest international airports are in Goa (250km) and Mumbai (365km).

JAIGARH PORT: PHASE 2

Phase 2 development at Jaigarh Port is currently in full swing and involves constructing Container LNG, Crude Oil/POL and multipurpose berths.

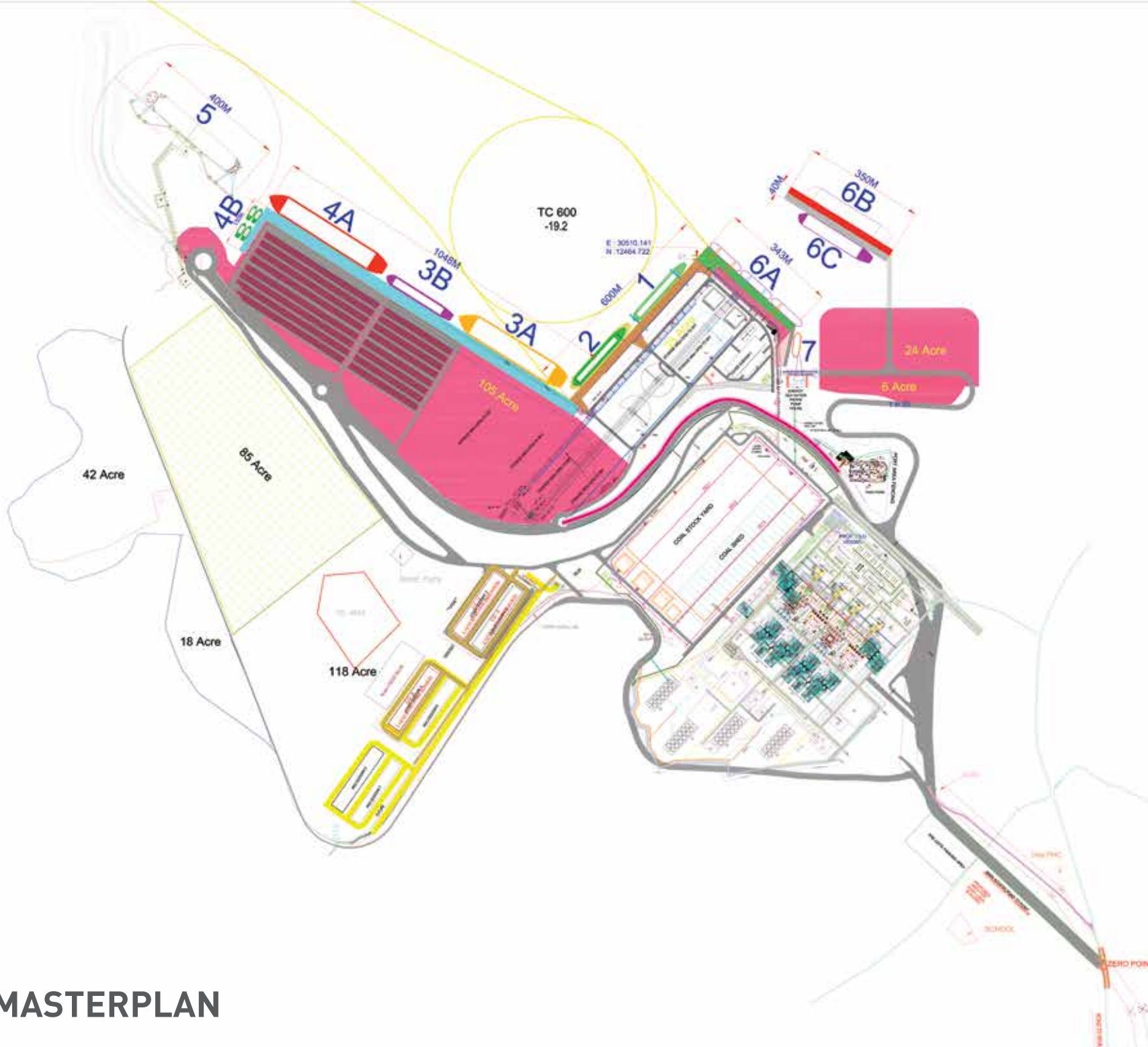
Several Indian public sector undertakings will be using this port and are partnering with JSW Infrastructure to lay a pipeline from Jaigarh to Miraj, in central Maharashtra, to supply crude and petroleum products to the Indian industrial heartland.

The proposed container terminal will add 1.2 Million TEUs PA; two berths of 742 meter quay length; Stack Height - G+7; 5,300 ground slots, CFS - 55 Acres, channel depth 16.5 meters.

It is preparing its facilities to direct berth next generation vessels such as largest dry bulk carriers (vale max), LNG carriers (Q-max), container vessels. EE series – 18,000 TEU), and very large crude carriers (340,000 MT), all in port.

Berth No	Length in Meters	Cargo Type	Status	Max Vessel Size
1	300	Mechanized Dry Bulk Berth	Operational	200000 DWT (Cape Size)
2	300	Multipurpose Berth	Operational	200000 DWT (Cape Size)
3A	398	Multipurpose Berth	Operational	200000 DWT (Cape Size) & Could Berth 400000 DWT (Valemax) in Future
3B	325	Container Berth	Under Construction	18000 Teu +
4A	325	Container Berth	Under Construction	18000 Teu +
4B	150	Tug Berth	Proposed	Tugs
5	345	LNG Terminal	Proposed	267000 m ³ (QMax)
6A	343	Multipurpose Berth	Operational	Up-to 50000 DWT, HandyMax
6B	350	Crude Oil + POL Terminal	Proposed	340000 DWT (VLCC)
6C	350	Crude Oil + POL Terminal	Proposed	340000 DWT (VLCC)
7	110	Off Shore	Proposed	Platform Supply Vessels (PSVs)





LEGEND:

	EXIST. CC/BT ROAD
	FUTURE MAIN ROAD
	EARTHEN/WBM ROAD
	CD WORK-RCC PIPE
	OPEN DRAIN (RCC/EW)
	STOCKYARD SUB DRAIN
	STOCK BARRIER
	BOUNDARY FENCING
	BOUNDARY WALL
	UG CABLE ROUTE
	440KV TOWER LINE
	33 KV HT LINE
	WIND SHIELD
	WATER SUPPLY LINE
	PORT BOUNDARY
	ENERGY BOUNDARY
	DSS WATER LINE
	FF'S WATER LINE
	PROPOSED CONVEYOR
	PROP. WATER LINE

NOTE:
1) ALL DIMENSIONS ARE IN METER EXCEPT OTHERWISE SPECIFIED.

JSW Jaigarh Port Ltd.		Kattiwadi Harbours & Port Jaigarh Rajapgaon-751014	
PROJECT: JSW JAIGARH PORT LTD.		DRAWING NO: 01/08/15	
DRAWN BY: SEZ		DATE: 01/08/15	
CHK. BY: JDC		DATE: 03/08/15	
APP. BY: MSRP		DATE: 02/09/15	
SHEET NO: 1		TOTAL SHEETS: 1	
PROJECT: JSW JAIGARH PORT LTD.		DRAWING TITLE: GENERAL LAYOUT DRAWING SHOWING ALL FACILITIES	
APP. NO: JSW/JPL/CON/MASTER/001		SCALE: AS SHOWN	
DATE: 02/09/15		SHEET NO: 1	
TOTAL SHEETS: 1		SCALE: AS SHOWN	
THIS DRAWING IS THE SOLE PROPERTY OF M/s. JSW Jaigarh Port Ltd. AND NOT TO BE REPRODUCED OR TRANSMITTED IN ANY FORM OR BY ANY MEANS WITHOUT THE WRITTEN PERMISSION OF M/s. JSW Jaigarh Port Ltd.		A1	

MASTERPLAN



PARADIP PORT

IRON ORE TERMINAL:

JSW Paradip Terminal Pvt Ltd -18-MTPA Capacity by 2020

- To be developed on Build Own Operate and Transfer basis to handle Iron Ore, Pellets etc.
- 370m berth.
- Loaders of 7000 TPH fully equipped with closed conveyor system.
- Fully mechanized stacking and reclaiming systems.
- Wagon tippers for rake handling and cargo receipt

COAL TERMINAL:

Paradip East Quay Coal Terminal Pvt Ltd

- 30-MTPA Capacity by 2020 .

JSWIL has secured the redevelopment of the existing EQ1, EQ2 & EQ3 terminals to handle Coal export.

- Quay Length 686 m.
- Long berth with a present draft of 12 m shall be deepened and strengthened to accommodate large Cape Size Vessels.
- Predominantly being developed for exporting / coastal movement of domestic coal from the Mahanadi Coal Fields.
- Facility would be equipped with rail receiving station for bottom discharge wagons, transporting, stacking & reclaiming of cargo and loading for exports / Coastal Movement.

The terminal when developed would have a capacity upwards of 30 million tons per annum by 2020.

Transforming Coastal Shipping: From Handymax to Capes

Terminals would open up avenues for Coastal Shipping thereby achieving economies of scale.

48MTPA
capacity by 2020

NANDGAON CAPTIVE JETTY

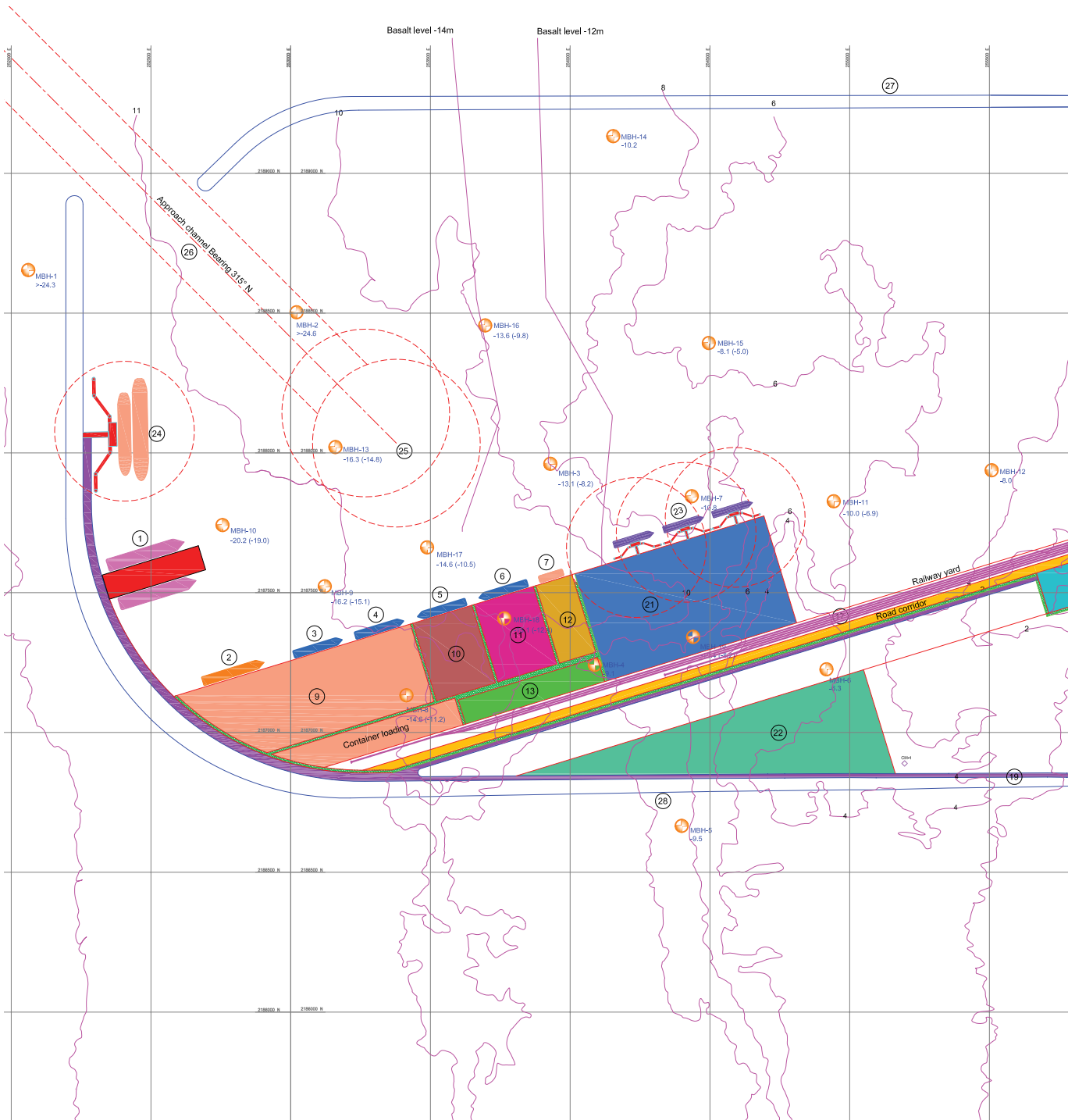
- Located 110 km north of Mumbai.
- Proposed captive facility will have capability to handle Bulk Container, LNG, Chemicals & other cargoes.
- Primarily developed for captive need, the facility can handle commercial cargo up-to 25 % of the capacity (MMB Port Policy 2016).

The facilities would include:

- 6 General Cargo berths including Containers.
- 1 Coal Berth.
- 1 LNG Berth.
- 3 Chemical & Other Liquid Cargo Berths.
- 200 Acres of storage facility.

RAIL - ROAD CONNECTIVITY

Dedicated Freight Corridor (DFC) & Western Railway Corridor 8 km away & NH-8, 22km from the site, the facility provides excellent opportunity for decongesting neighboring ports and catering to EXIM requirements of South Gujarat & Northern Maharashtra.



17 MTPA
capacity by 2020



DHARAMTAR PORT

Located in Dolvi in the Raigad district of Maharashtra, JSW Dharamtar Port is a riverine facility that handles bulk cargo. It is located 23 nautical miles from Mumbai Harbor and its proximity to Mumbai and Jawaharlal Nehru Port (Nhava Sheva harbors) in addition to its ability to handle bulk and break-bulk cargo makes it the ideal choice for incoming vessels. It has a total quay length of 1750 meters out of which 1044 meters is operational and 706 meters is under construction. Its current 8 MTPA capacity is being upped to 40 MTPA in phases by 2020.

Primarily developed for captive need, the facility can handle commercial cargo upto 25% of the capacity. (MMB Port policy 2016)

Dharamtar Port has:

- Close proximity to Mumbai and Jawaharlal Nehru Port Trust (Nhava Sheva harbors).
- A riverine terminal with 8 berths in line with a quay length of 1044 meters to handle 8,000 dead weight (DWT) mini bulk carriers that are currently being constructed.
- 3 barge unloaders of 2,500 TPH (iron ore) in Phase 1.
- Conveying and storage systems.

Dharamtar Port currently looks after JSW Group's Dolvi and Kalmeshwar Steel Plants' export-import (EXIM) requirements.

40 MTPA
capacity by 2020



SOUTHWEST PORT

Located close to Vasco Da Gama, Goa, South West Port Limited (SWPL) began operations in 2004 as a commercial terminal to provide vital logistics support to the JSW Steel plant at Vijayanagar (Karnataka). SWPL operates two dedicated bulk cargo berths (5A & 6A) at Mormugoa Port Trust on a build, own, operate, transfer (BOOT) basis.

The current capacity of 10 MTPA is being increased to 15 MTPA this year. The terminal has handled around 70 MMT and 19,000 rakes since its inception.

South West Port has:

- 450 meter long berth number 5A & 6A.
- 3 mobile harbor cranes.
- 2 ship unloaders that are currently being installed, with terminal throughput capacity of 72,000 TPD for handling iron ore and 58,000 TPD for handling coal.
- Back-up conveyor systems and in-motion wagon loading system for rail dispatch.
- Online tarpulin covering systems.

The facility is equipped to deal with operating conditions in India. Its state-of-the-art dust suppression systems, closed transport wagons, and sprinkler systems ensure ambient conditions are optimum for storing and transporting cargo.

***Photo caption: The Ministry of Shipping commenced cape dredging at Mormugao to berth large, cape-sized vessels. Will be Cape compliant soon.**

15MTPA
capacity by 2020



OUR ENVIRONMENT AND SAFETY

The JSW Group uses latest technologies and systems to conserve the environment it works in.

JSW Jaigarh Port boasts of India's first covered coal stock yard. It is the largest storage facility of its kind in Asia and can accommodate up to 3,00,000 MT in an environment-friendly way. The shed is equipped with fire fighting and dust suppression systems to prevent fine coal particles from being carried by wind and causing pollution. The aquadyne system uses sprinkled water at every stage of the storage process, from unloading to reclamation, to reduce dust emission. The system is very energy efficient. The process uses rainwater during the wet monsoon months to suppress dust.

In addition to using low-ash and low-sulphur coal to minimize sulphur dioxide emission from the stacks, the Port has installed a flue gas **desulphurization unit**. It has installed large **windshields** to stem the flow of air to the stack yard preventing dust from being carried on to the neighboring communities. The state of the art air-monitoring system keeps an eye on pollution levels.

The stack yard also has a thick **green belt** around it. As part of its green belt development program, the Port is developing a 6-hectare area with 30,000 saplings and a 10-hectare mango plantation.

JSW JPL is certified with:

- ISO 9001:2008 (Quality Management System)
- ISO 14001:2004 (Environment Management System)
- OHSAS 18001:2007



*Photo caption: Covered Coal Shed

OUR PEOPLE AND ACCOLADES

As we rapidly globalize and grow our business in our goal to be an admired global brand, attracting and developing top-notch talent is a key strategic priority.

Recently, JSW Infrastructure won the 2015 Golden Peacock HR Excellence Award. This prestigious industry prize recognizes excellence in human resources management. A panel of judges from industry and government bodies picks winners.

"Receiving this award has bolstered the motivation of all the individuals in the organization and has reinforced that we are heading in the right direction to attain our Vision 2020," says Captain BVJK Sharma, Joint Managing Director and CEO of JSW Infrastructure.

JSW Infrastructure also won the 2015 Rising Star in the Maritime and Port Infra Sector award. Shipping and logistics companies in India present this award to a peer that has made strides in Maritime Logistics.



OUR COMMUNITY

JSW Foundation administers the social development initiatives of the JSW Group. Mrs Sangita Jindal chairs the Foundation. It is an independent institution and is governed by a Board of Trustees drawn from the Senior Management of the JSW Group of companies. The Foundation undertakes activities in the areas of Education, Health, Livelihood & Empowerment, Sports, Environment and Arts, Culture & Heritage.

ENVIRONMENT

The Jaigarh Port along with BNHS is implementing a comprehensive livelihood program to conserve the Mangroves in the area. This project is of critical importance, since the ratnagiri coastal area is the only area where this specific specie of mangrove (xylocarpus) still survives. The project aims to increase the mangrove cover by 5000 trees through promoting crab cultivation in the area.

EDUCATION

- **Early Childhood Education:** JSW Foundation has been intervening in Anganwadis to enhance the quality of Early Childhood Education along with other services rendered at the centre. Currently we have intervened in over 120 Anganwadis and SWPL has built and handed over to the government a "Model Anganwadi Center- the first Anganwadi cum crèche in the entire state of Goa".
- **School Drop Out Prevention:** To address school dropout issue, especially amongst girls Nandgaon Port CSR has designed a program to ensure that there are no girl drop outs before standard 10th. The program focuses not just on financial aid, but also on counselling of the girls, their families and also offering scholarships to help children continue their education.
- **Jindal Vidya Mandir:** Our Jindal Vidya Mandir in Jaigad is providing quality education to both the children of our employees and the community. The school is growing fast and is moving from the traditional pedagogy to newer participative methods where the child is the centre of all learning.

HEALTH

- **Anemia Reduction:** Jaigarh port is working in mission mode to reduce the incidence of anemia by 75% in our surrounding location. Across all our locations, there are interventions aimed at screening and supporting women with information and nutrition supplements to reduce the prevalence of anemia.
- **PHC Upgradation:** Promoting institutional delivery is a focus area for JSW Foundation. To increase the acceptability of government hospitals, JSW has been working closely with the Public Health Centres (The first point of contact between the rural community and a doctor) and upgrading the facilities to ensure good quality care.



OUR OFFICES

JSW Infrastructure Ltd.

JSW Centre,
Bandra Kurla Complex, Bandra (East)| Mumbai – 400051
Tel: (022) 42861000 | Fax: (022) 42863000

JSW Jaigarh Port Ltd.

At Post: Jaigarh, Tal & Dist: Ratnagiri, Maharashtra - 415614.
Tel: (02357) 242551/52/53 | Fax: (02357) 242556
marketing.jpl@jsw.in

JSW Paradip Port Terminal Pvt. Ltd.

4th Floor, Paradip Bhawan, Paradip Port,
Dist: Jagatsinghpur, Odhisa.
Tel: 09437088381
marketing.ptpl@jsw.in

JSW Nandgaon Port Pvt. Ltd.

JSW Centre,
Bandra Kurla Complex, Bandra (East)| Mumbai – 400051
Tel: (022) 42861000 | Fax: (022) 42863000

JSW Dharamtar Port Pvt. Ltd.

At Dharamtar, Post: Dolvi, Tal: Pen Dist: Raigad – 402107
Tel: (02143) 246000 / 2467000 / 277502 to 15 | Fax: (02143) 277800
marketing.dppl@jsw.in

South West Port Ltd.

1st Floor, Port Users Complex, Mormugao Harbour, Mormugao,
Goa – 403 803.
Tel: (0832) 2523000 | Fax: (0832) 2523006
marketing.swpl@jsw.in



Regd. Office: JSW Centre, Bandra Kurla Complex, Bandra (East), Mumbai 400 051
Tel: (022) 42861000 | Fax: (022) 42863000 | Email: marketing.jpl@jsw.in | Website: www.jsw.in
CIN: U45200MH2006DLC161268